

» **FIELD REPLACEMENT KIT #4027984 PARTS + TOOLS**



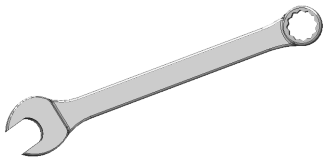
**OPERATOR'S SAFETY MANUAL**  
 Part #: **4026288** ■ Quantity: **1**



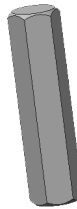
**LOCTITE**  
 Part #: **4028103** ■ Quantity: **1**



**ALLEN WRENCH**  
 Part #: **4027985** ■ Quantity: **1**



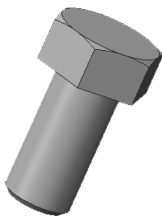
**9/16 IN. WRENCH**  
 Part #: **4028104** ■ Quantity: **2**



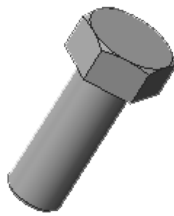
**HEX DRIVE SHAFT**  
 Part #: **4026032** ■ Quantity: **4**



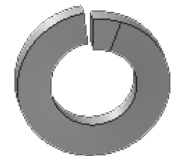
**WORM SHAFT COUPLER**  
 Part #: **4026564** ■ Quantity: **3**



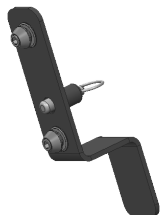
**3/8 IN. X 1 IN. HEX SCREW**  
 Part #: **9114010** ■ Quantity: **16**



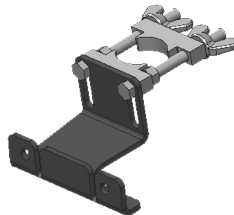
**3/8 IN. X 3/4 IN. HEX SCREW**  
 Part #: **9114000** ■ Quantity: **16**



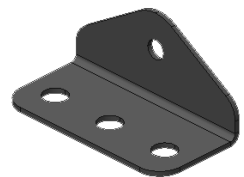
**3/8 IN. LOCK WASHER**  
 Part #: **9144020** ■ Quantity: **16**



**PLATFORM HOLD DOWN**  
 Part #: **4026392** ■ Quantity: **1**



**DRILL BRACKET**  
 Part #: **4026396** ■ Quantity: **1**



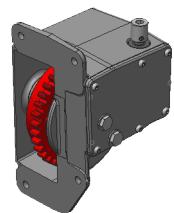
**TIE MOUNT BRACKET**  
 Part #: **4026157** ■ Quantity: **4**



**TIE PLATE**  
 Part #: **4027364** ■ Quantity: **2**



**LOCK PIN**  
 Part #: **4026162** ■ Quantity: **16**



**HEAVY DUTY GEARBOX**  
 Part #: **4022484** ■ Quantity: **1**

Refer to the Field Replacement Kit instructions located in this box, scan the QR code on the right, or visit [reechcraft.com/field-replacement-kit](http://reechcraft.com/field-replacement-kit). To order replacement parts, call customer service at the number below.

